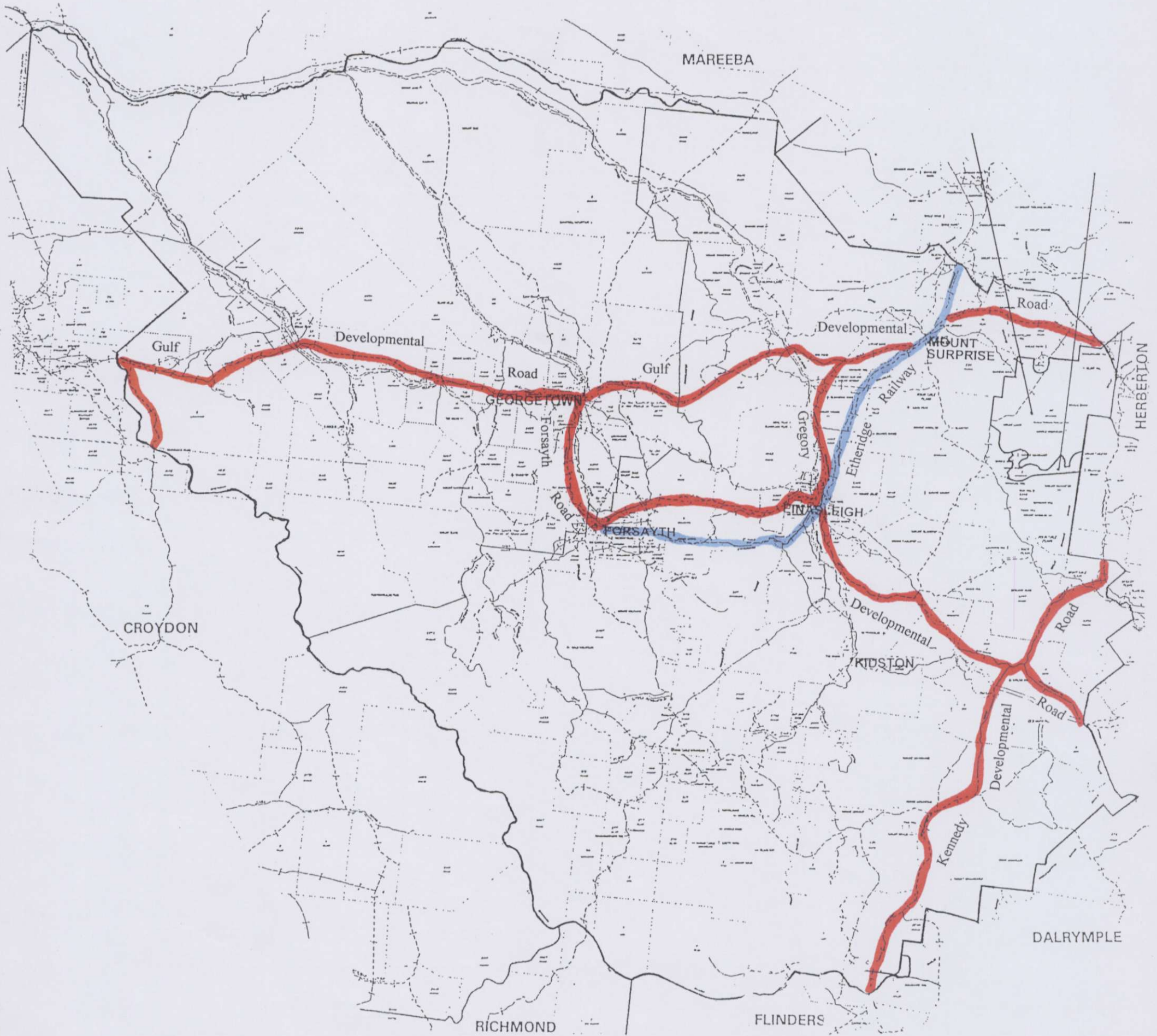

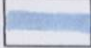


ETHERIDGE SHIRE COUNCIL

PLANNING SCHEME



LEGEND

-  State Controlled Roads
-  Railway Line (Savannahlander)

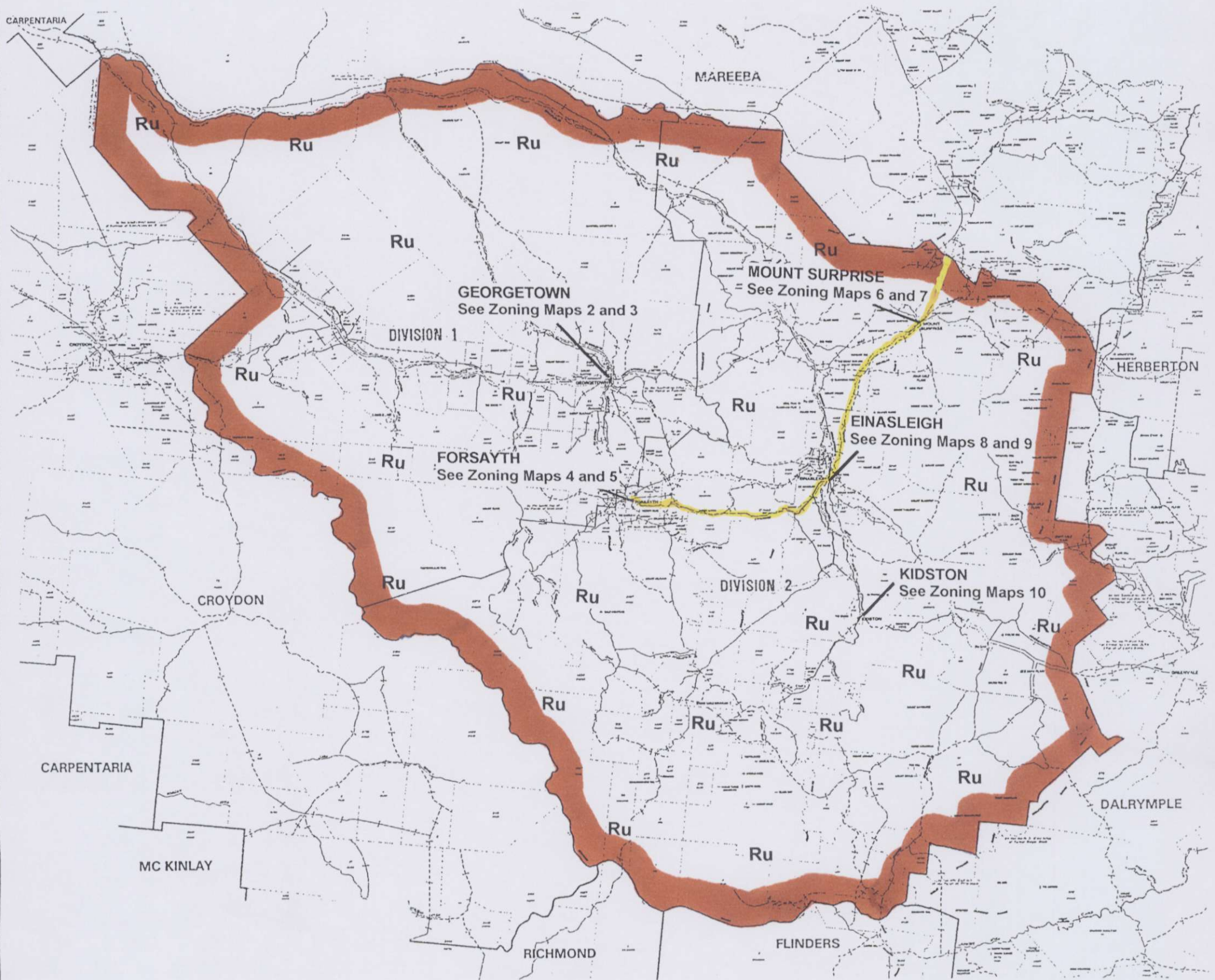
MAP 1 SHIRE STRATEGY MAP ETHERIDGE SHIRE

Source:- Department of Main Roads,
Peninsula Road Map - District 11

This planning scheme map took effect on 28/10/2005.

ETHERIDGE SHIRE COUNCIL

PLANNING SCHEME



NOTES

1. Unless otherwise shown on the more detailed Zoning Maps, all land in the Shire is in the Rural Zone.
2. Lands under State tenures are allocated to a zone, however, the use of the lands depends on the State making the land available after the consideration of native title rights and interests. Until those matters are resolved there is no certainty about the availability of the land for the purposes identified in this scheme.

LEGEND

- CI Community Infrastructure (Railway Line)
- Ru Rural

MAP 1 ZONING ETHERIDGE SHIRE

This planning scheme map took effect on 28/10/2005.

ETHERIDGE SHIRE COUNCIL

PLANNING SCHEME



LEGEND

Com	Commercial
CI	Community Infrastructure
Ind	Industrial
Ru	Rural

NOTES

1. Unless otherwise shown on the more detailed Zoning Maps, all land in the Shire is in the Rural Zone.
2. Lands under State tenures are allocated to a zone, however, the use of the lands depends on the State making the land available after the consideration of native title rights and interests. Until those matters are resolved there is no certainty about the availability of the land for the purposes identified in this scheme.

MAP 2 ZONING GEORGETOWN ENVIRONS

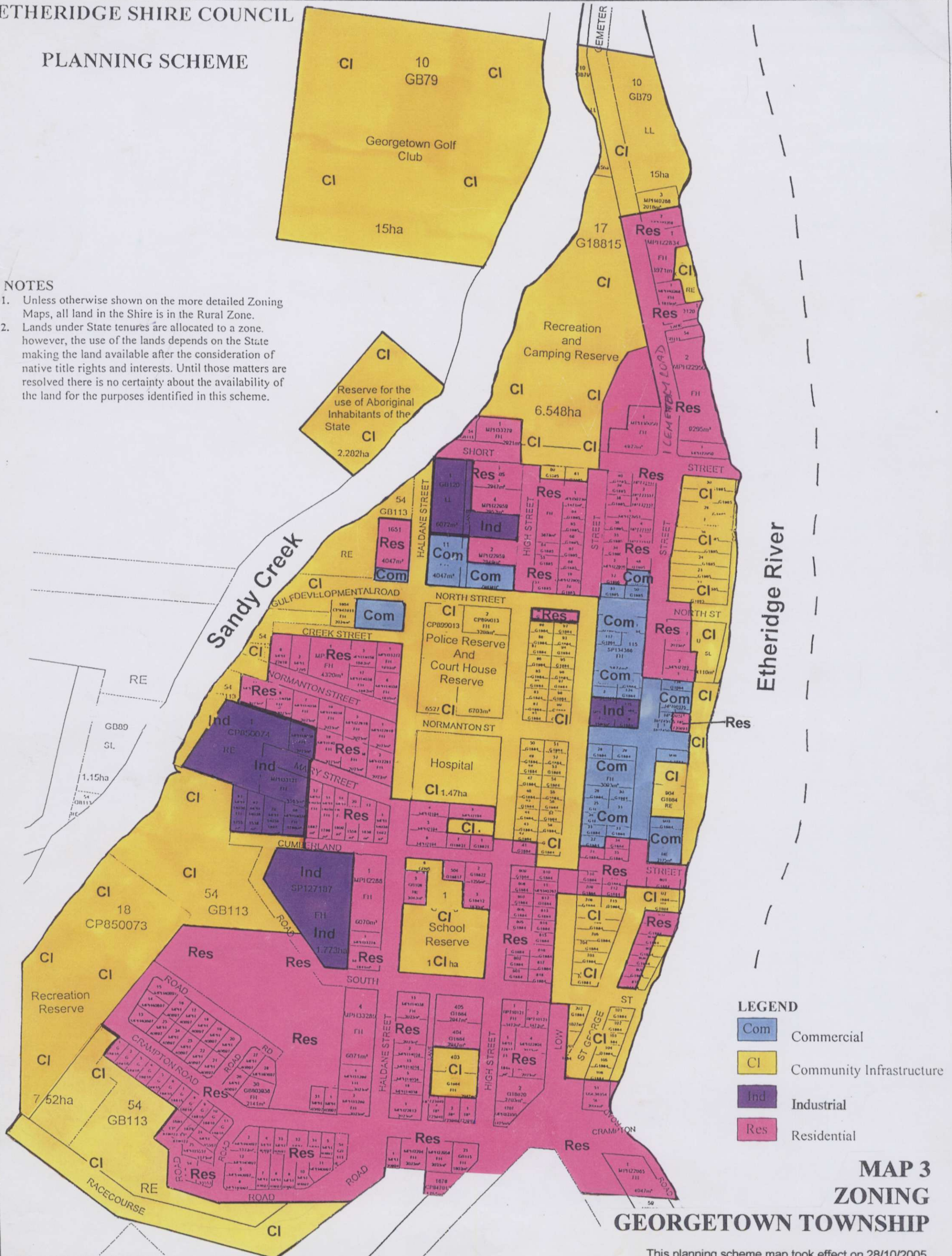
This planning scheme map took effect on 28/10/2005.

ETHERIDGE SHIRE COUNCIL

PLANNING SCHEME

NOTES

1. Unless otherwise shown on the more detailed Zoning Maps, all land in the Shire is in the Rural Zone.
2. Lands under State tenures are allocated to a zone, however, the use of the lands depends on the State making the land available after the consideration of native title rights and interests. Until those matters are resolved there is no certainty about the availability of the land for the purposes identified in this scheme.



LEGEND

- Com Commercial
- CI Community Infrastructure
- Ind Industrial
- Res Residential

MAP 3
ZONING
GEORGETOWN TOWNSHIP

This planning scheme map took effect on 28/10/2005.

ETHERIDGE SHIRE COUNCIL

PLANNING SCHEME



NOTES

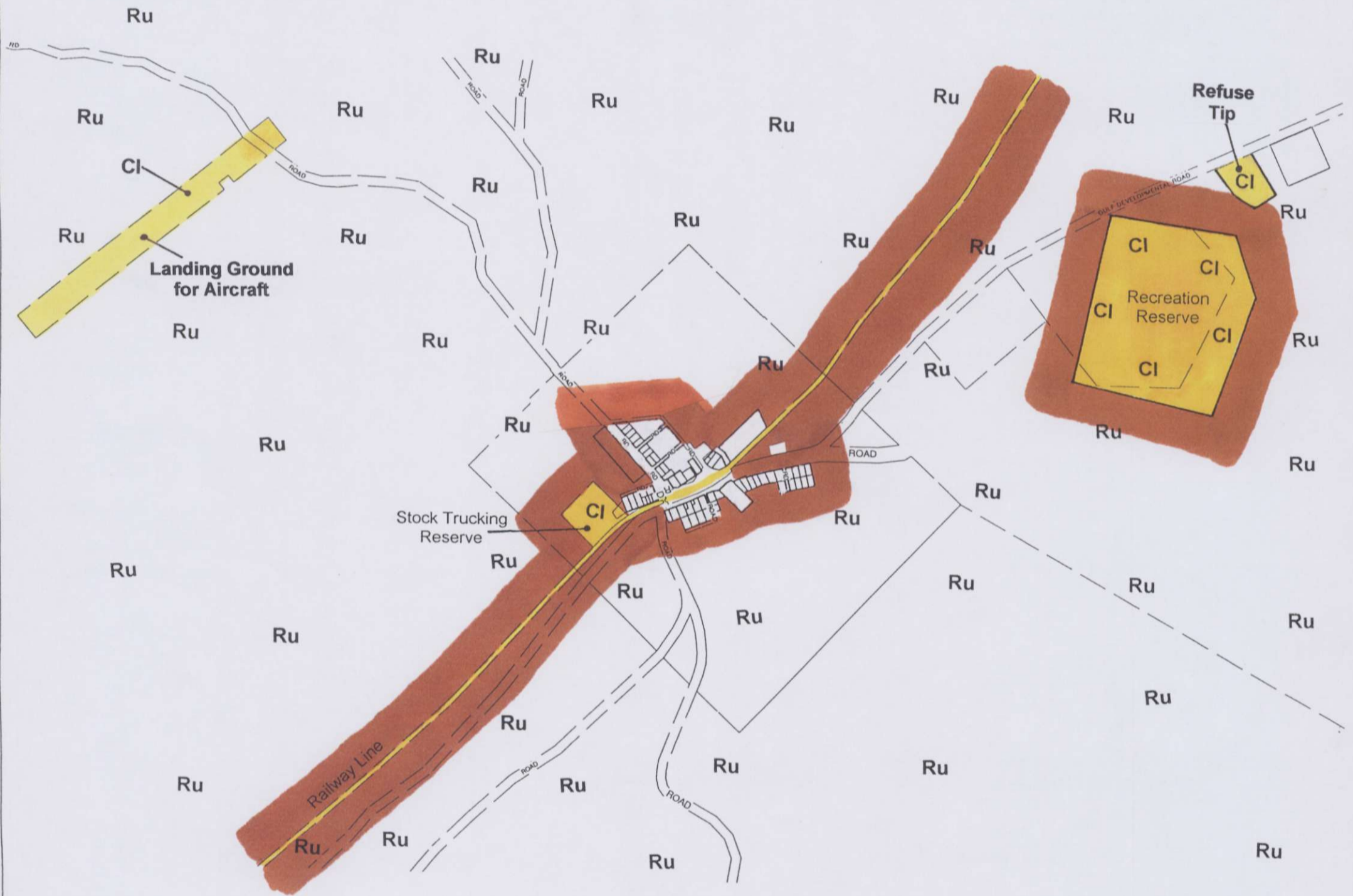
1. Unless otherwise shown on the more detailed Zoning Maps, all land in the Shire is in the Rural Zone.
2. Lands under State tenures are allocated to a zone, however, the use of the lands depends on the State making the land available after the consideration of native title rights and interests. Until those matters are resolved there is no certainty about the availability of the land for the purposes identified in this scheme.

MAP 4 ZONING FORSAYTH ENVIRONS

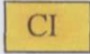
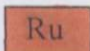
This planning scheme map took effect on 28/10/2005.

ETHERIDGE SHIRE COUNCIL

PLANNING SCHEME



LEGEND

	CI	Community Infrastructure
	Ru	Rural

NOTES

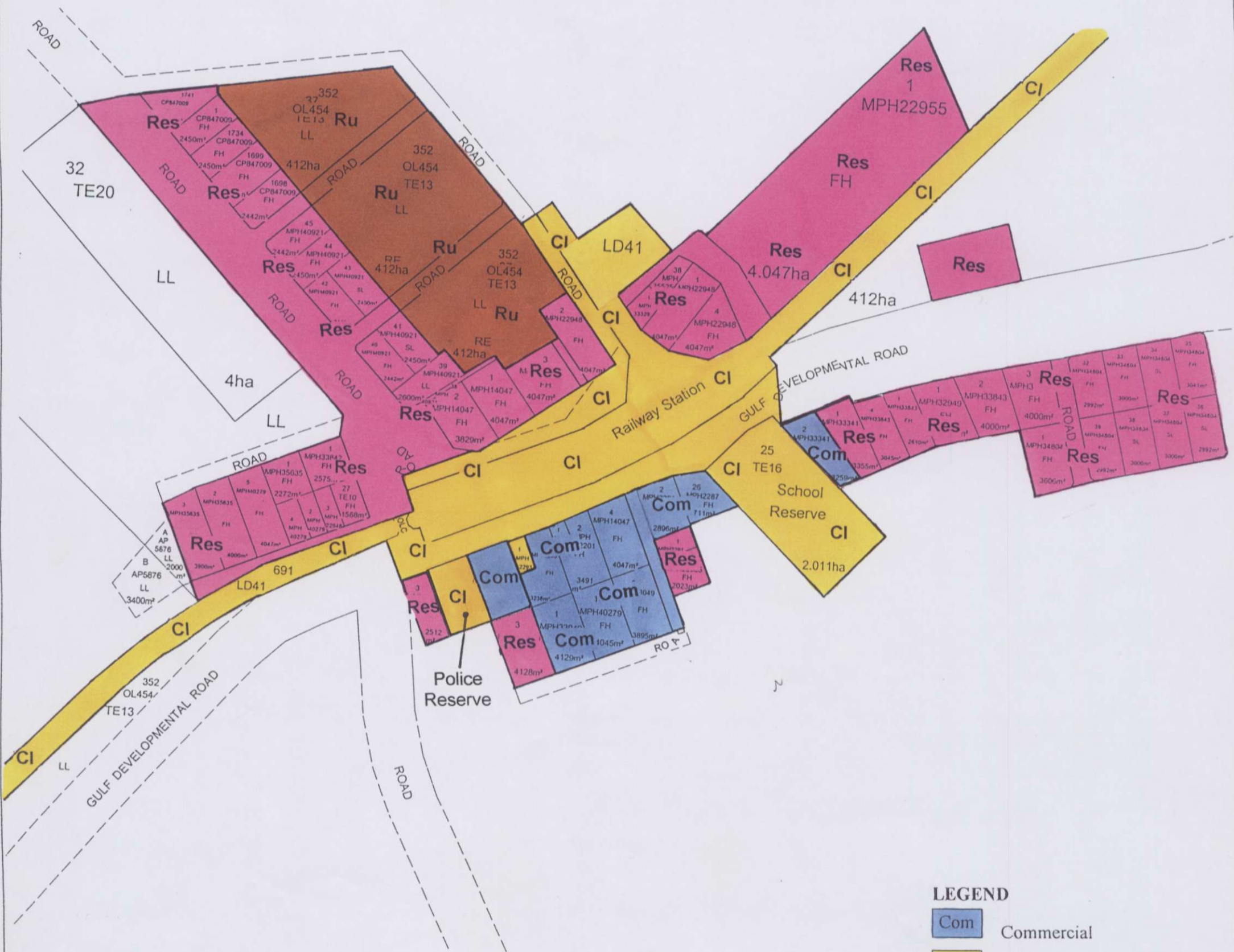
1. Unless otherwise shown on the more detailed Zoning Maps, all land in the Shire is in the Rural Zone.
2. Lands under State tenures are allocated to a zone, however, the use of the lands depends on the State making the land available after the consideration of native title rights and interests. Until those matters are resolved there is no certainty about the availability of the land for the purposes identified in this scheme.

MAP 6 ZONING MOUNT SURPRISE ENVIRONS

This planning scheme map took effect on 28/10/2005.

ETHERIDGE SHIRE COUNCIL

PLANNING SCHEME



LEGEND

Com	Commercial
CI	Community Infrastructure
Res	Residential
Ru	Rural

- NOTES**
1. Unless otherwise shown on the more detailed Zoning Maps, all land in the Shire is in the Rural Zone.
 2. Lands under State tenures are allocated to a zone, however, the use of the lands depends on the State making the land available after the consideration of native title rights and interests. Until those matters are resolved there is no certainty about the availability of the land for the purposes identified in this scheme.

MAP 7 ZONING MOUNT SURPRISE TOWNSHIP

This planning scheme map took effect on 28/10/2005.

ETHERIDGE SHIRE COUNCIL

PLANNING SCHEME



NOTES

1. Unless otherwise shown on the more detailed Zoning Maps, all land in the Shire is in the Rural Zone.
2. Lands under State tenures are allocated to a zone, however, the use of the lands depends on the State making the land available after the consideration of native title rights and interests. Until those matters are resolved there is no certainty about the availability of the land for the purposes identified in this scheme.

LEGEND

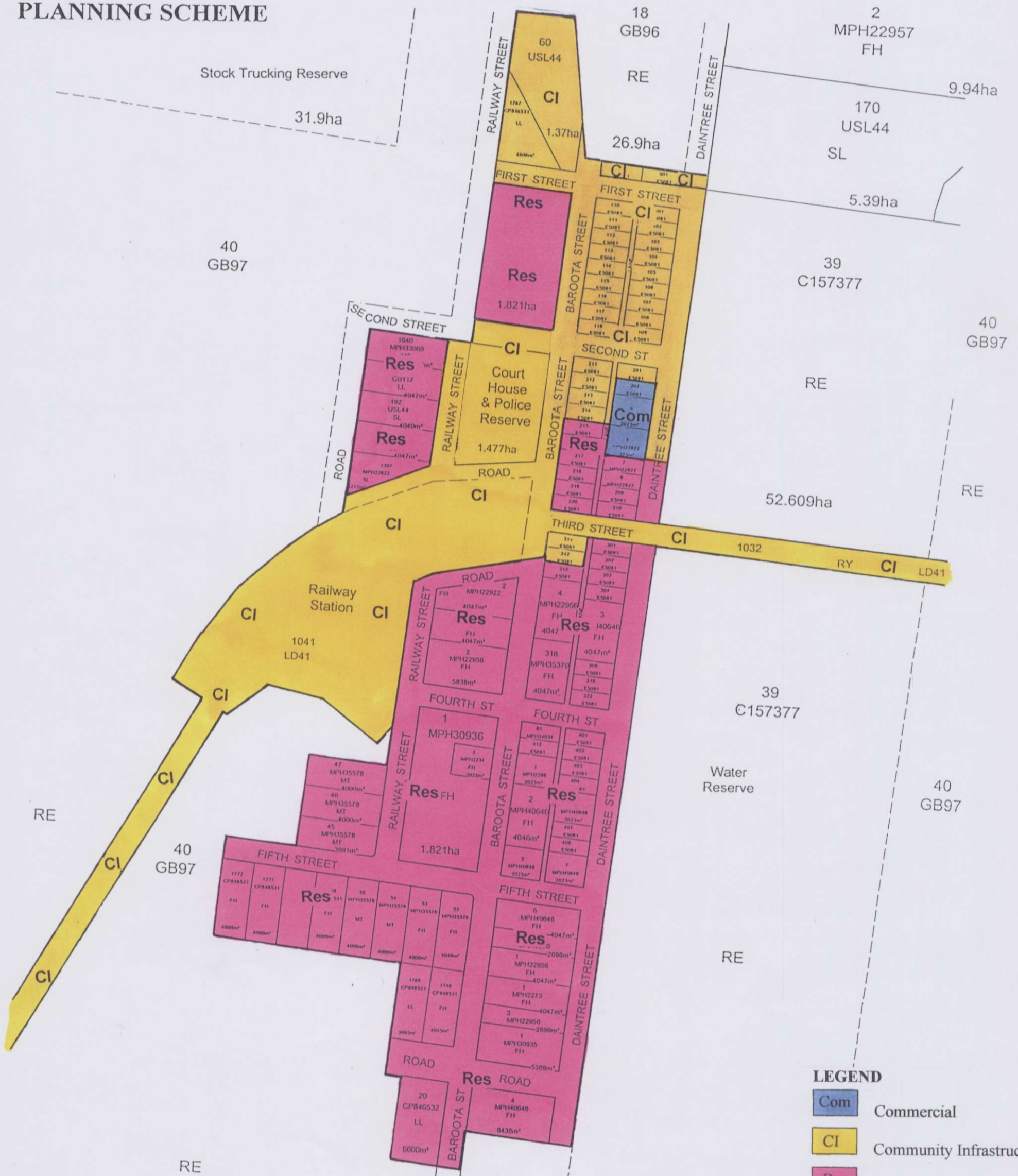
- CI Community Infrastructure
- Ru Rural

MAP 8
ZONING
EINASLEIGH ENVIRONS

This planning scheme map took effect on 28/10/2005.

ETHERIDGE SHIRE COUNCIL

PLANNING SCHEME



LEGEND

- Commercial
- Community Infrastructure
- Residential

NOTES

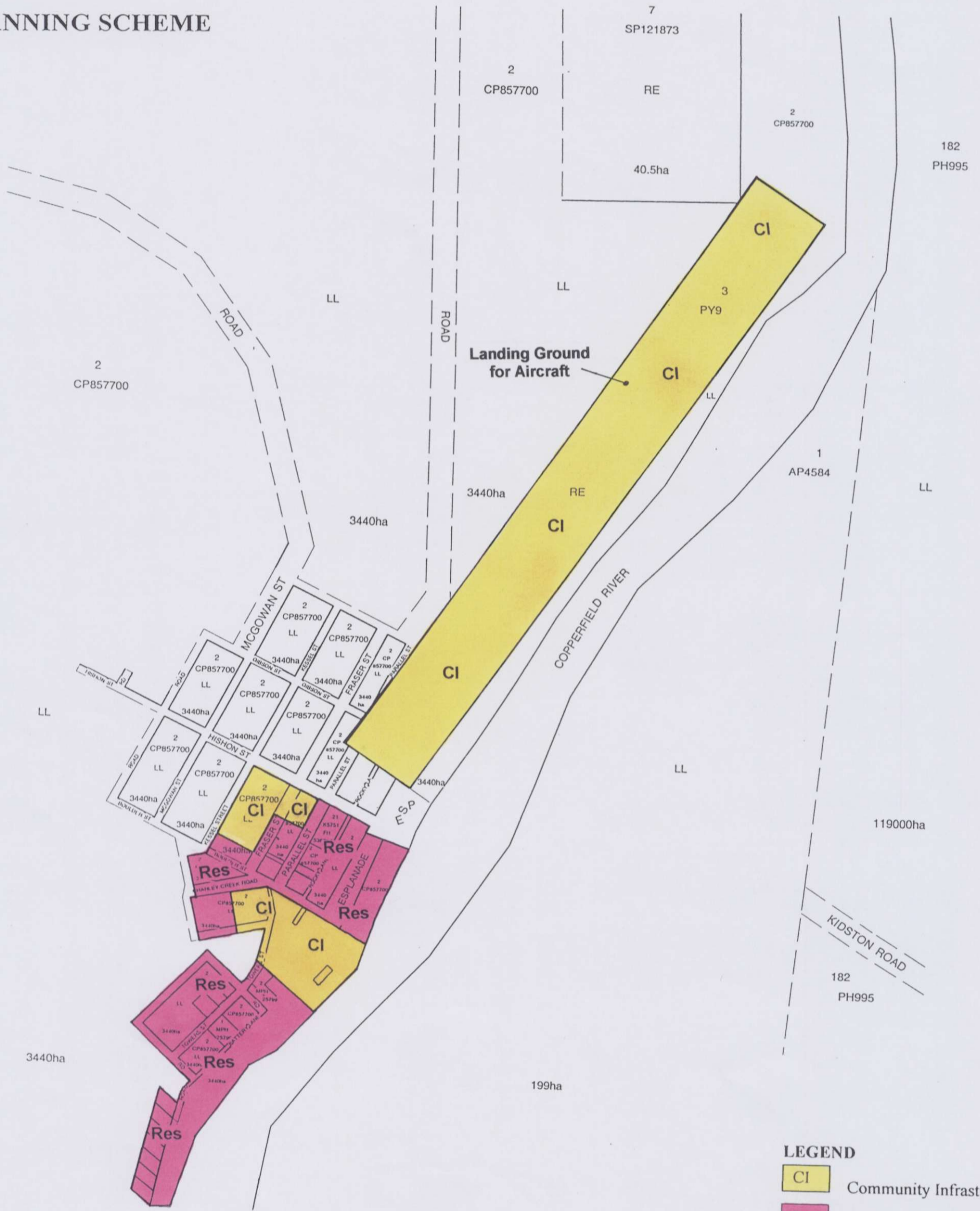
1. Unless otherwise shown on the more detailed Zoning Maps, all land in the Shire is in the Rural Zone.
2. Lands under State tenures are allocated to a zone, however, the use of the lands depends on the State making the land available after the consideration of native title rights and interests. Until those matters are resolved there is no certainty about the availability of the land for the purposes identified in this scheme.

MAP 9 ZONING EINASLEIGH TOWNSHIP

This planning scheme map took effect on 28/10/2005.

ETHERIDGE SHIRE COUNCIL

PLANNING SCHEME



LEGEND

CI Community Infrastructure

Res Residential

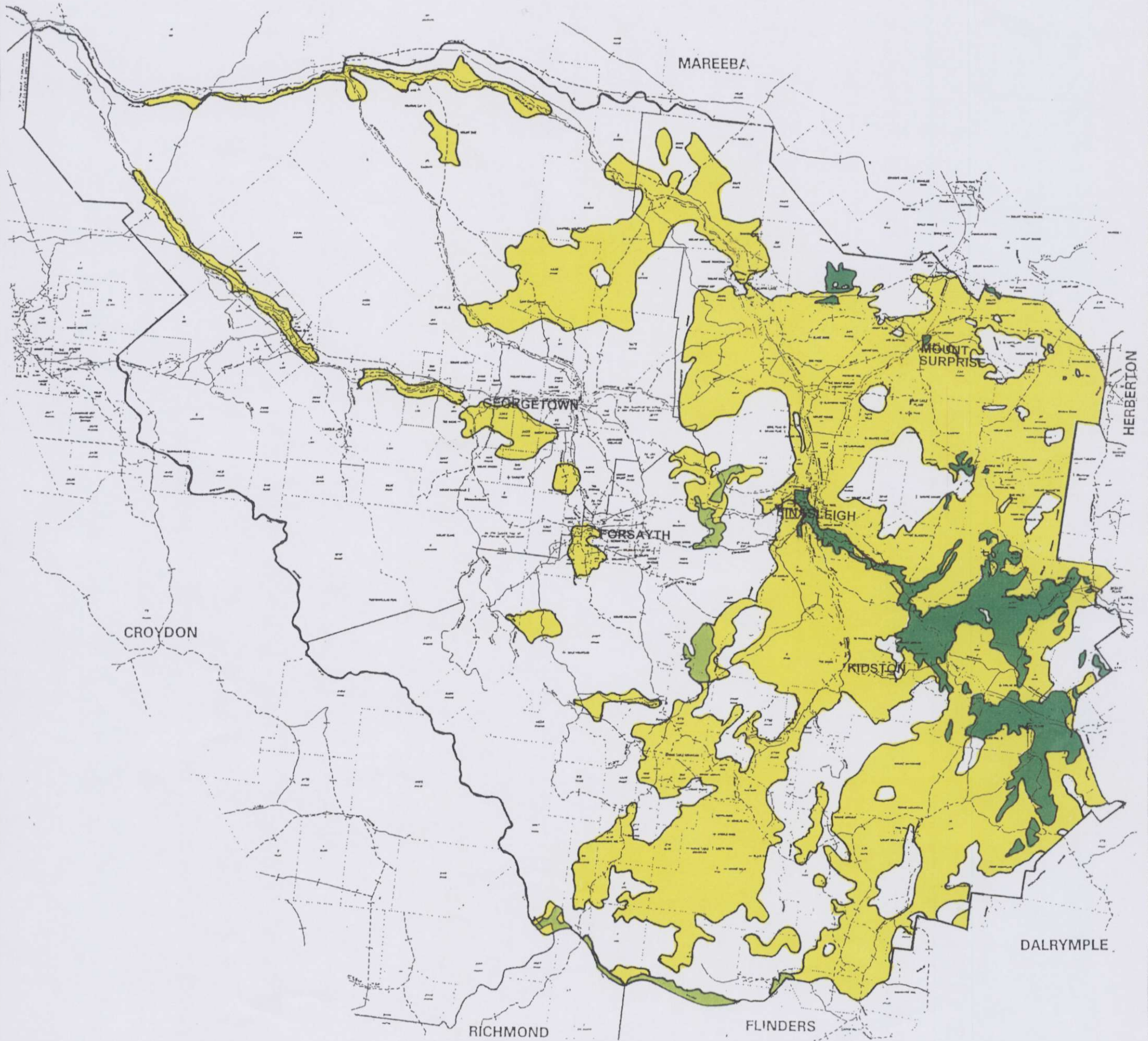
- NOTES**
1. Unless otherwise shown on the more detailed Zoning Maps, all land in the Shire is in the Rural Zone.
 2. Lands under State tenures are allocated to a zone. however, the use of the lands depends on the State making the land available after the consideration of native title rights and interests. Until those matters are resolved there is no certainty about the availability of the land for the purposes identified in this scheme.

MAP 10
ZONING
KIDSTON TOWNSHIP

This planning scheme map took effect on 28/10/2005.

ETHERIDGE SHIRE COUNCIL

PLANNING SCHEME



Sources:-

- + Cropping Potential in the Eastern Etheridge Shire Area North Queensland (1984) Kent, D.J. and Shepherd, R.N.
- + Land Resources of the Einsleigh- Atherton Dry Tropics (1989) Grundy, M.J. *et al.*
- + General Report on Lands of the Leichhardt Gilbert Area Queensland (1964) Perry, R.A. *et al.* (CSIRO)

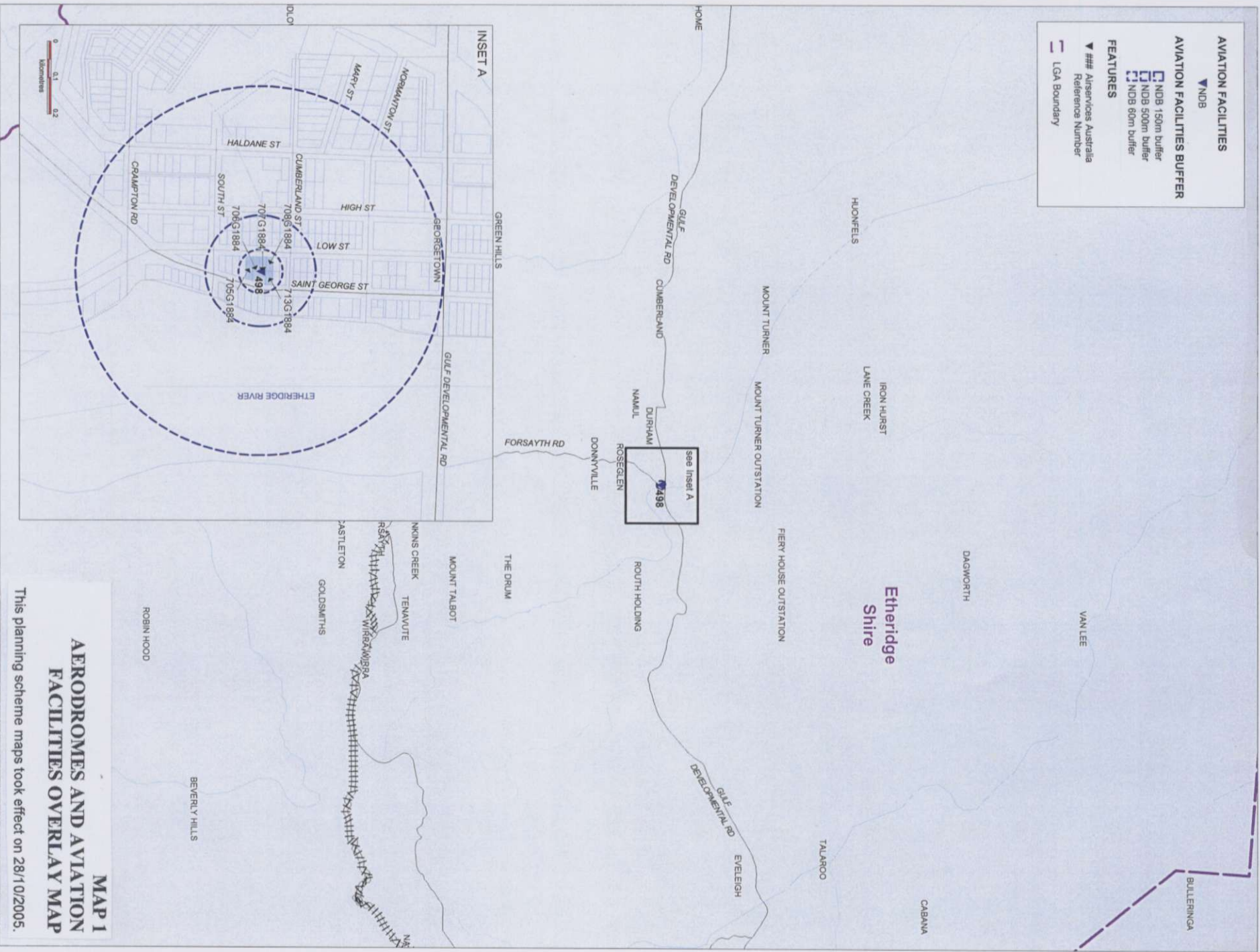
Land Units	Color
A	Dark Green
B	Medium Green
C	Yellow

GOOD QUALITY AGRICULTURAL LAND OVERLAY MAP

This planning scheme map took effect on 28/10/2005.

ETHERIDGE SHIRE COUNCIL PLANNING SCHEME

- AVIATION FACILITIES**
- ▼ NDB
- AVIATION FACILITIES BUFFER**
- NDB 150m buffer
 - NDB 500m buffer
 - NDB 80m buffer
- FEATURES**
- ▼ ### Anservices Australia Reference Number
 - LGA Boundary

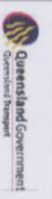


MAP 1 AERODROMES AND AVIATION FACILITIES OVERLAY MAP

This planning scheme maps took effect on 28/1/01/2005.

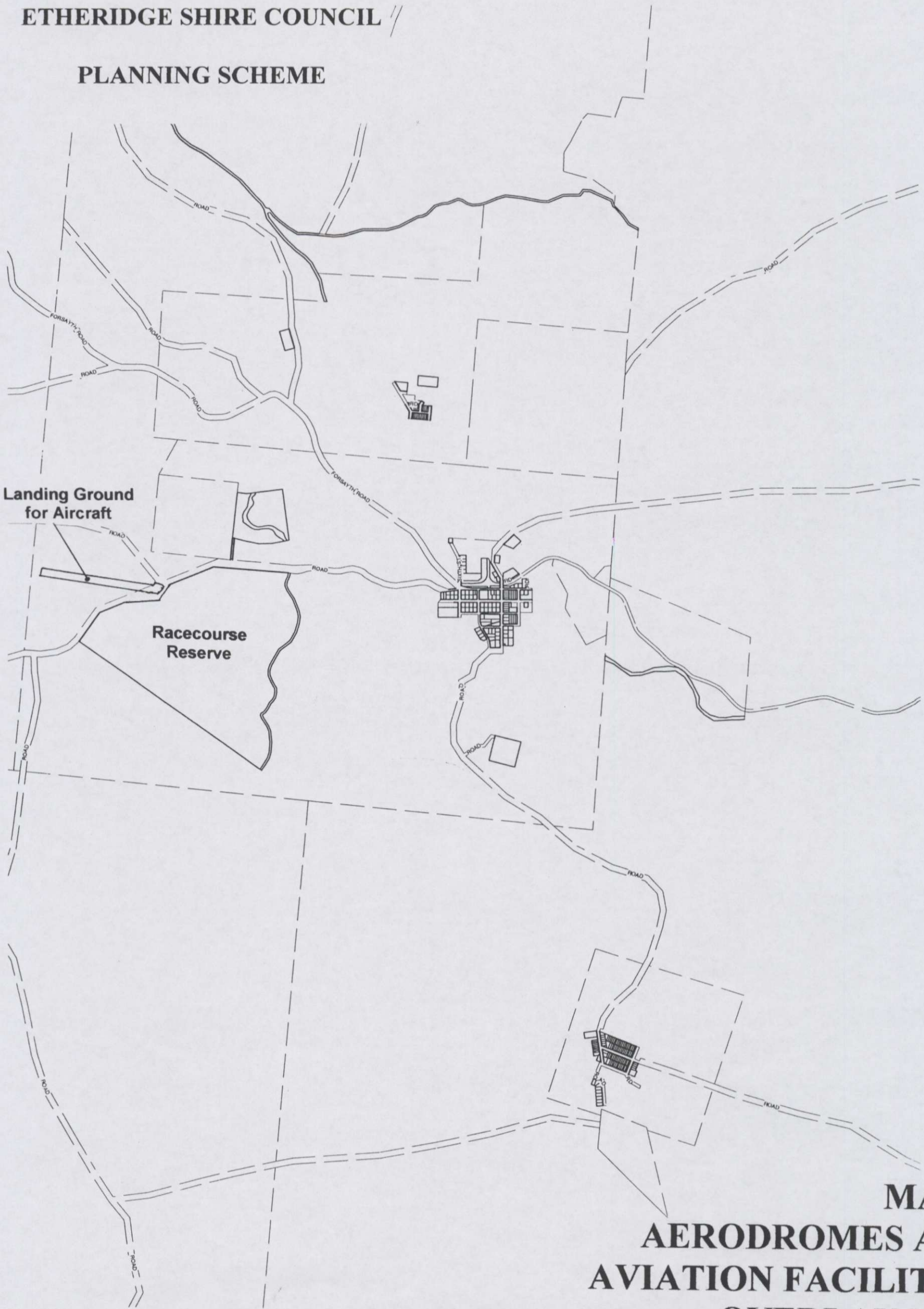
LGA	Location	Asa. Ref. No	Latitude	Longitude
Etheridge	Georgetown	498	18 17 39.85	143 32 56.57

PTD-UL-26/09/2003-551U

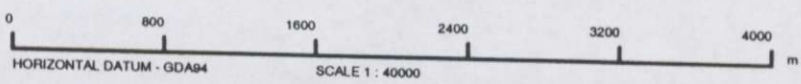


ETHERIDGE SHIRE COUNCIL //

PLANNING SCHEME



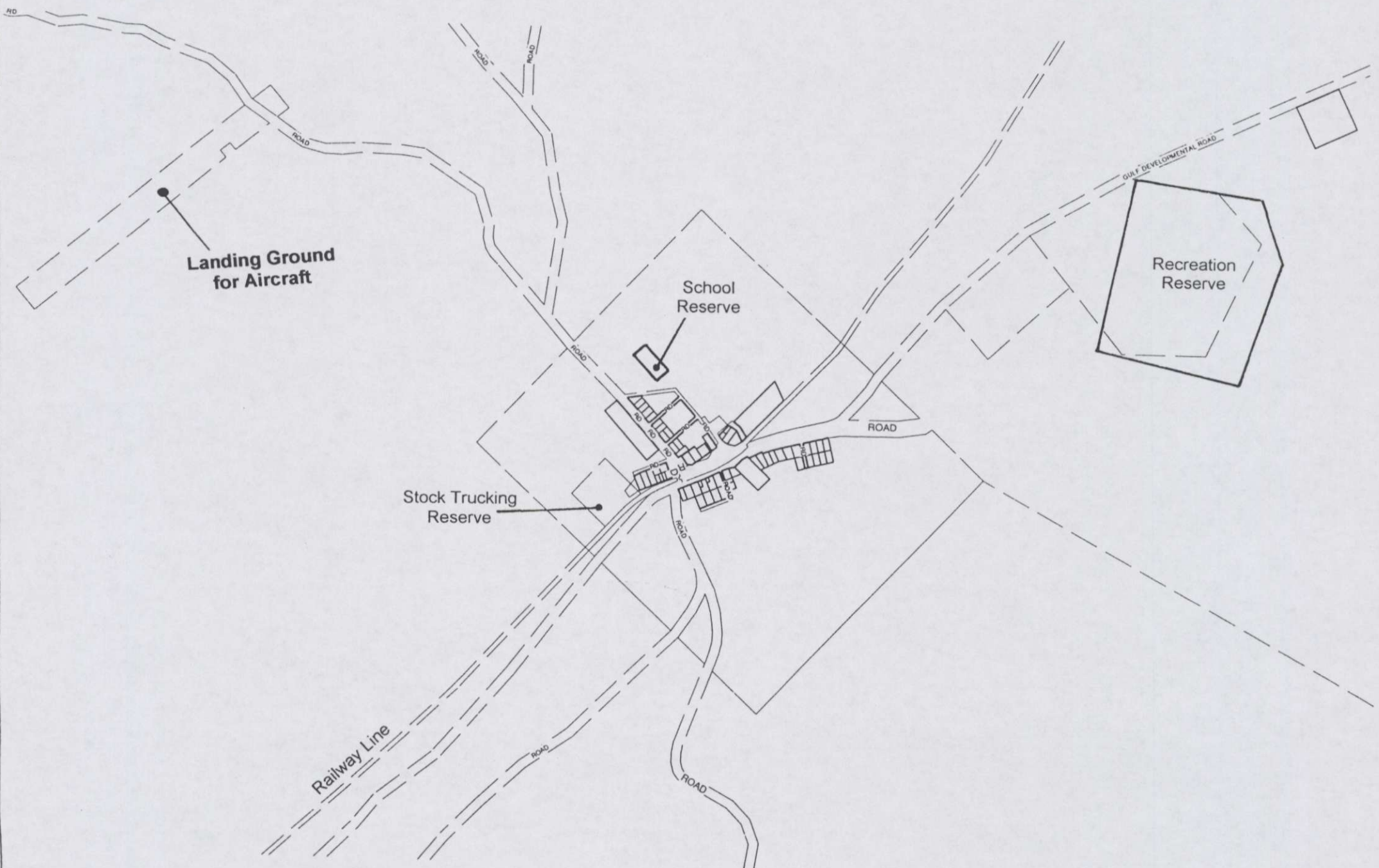
**MAP 2
AERODROMES AND
AVIATION FACILITIES
OVERLAY MAP
FORSAYTH ENVIRONS**



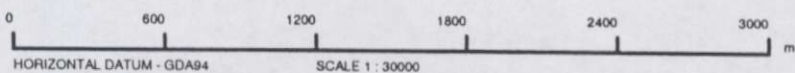
This planning scheme maps took effect on 28/10/2005.

ETHERIDGE SHIRE COUNCIL

PLANNING SCHEME



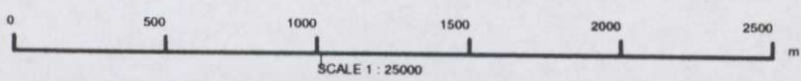
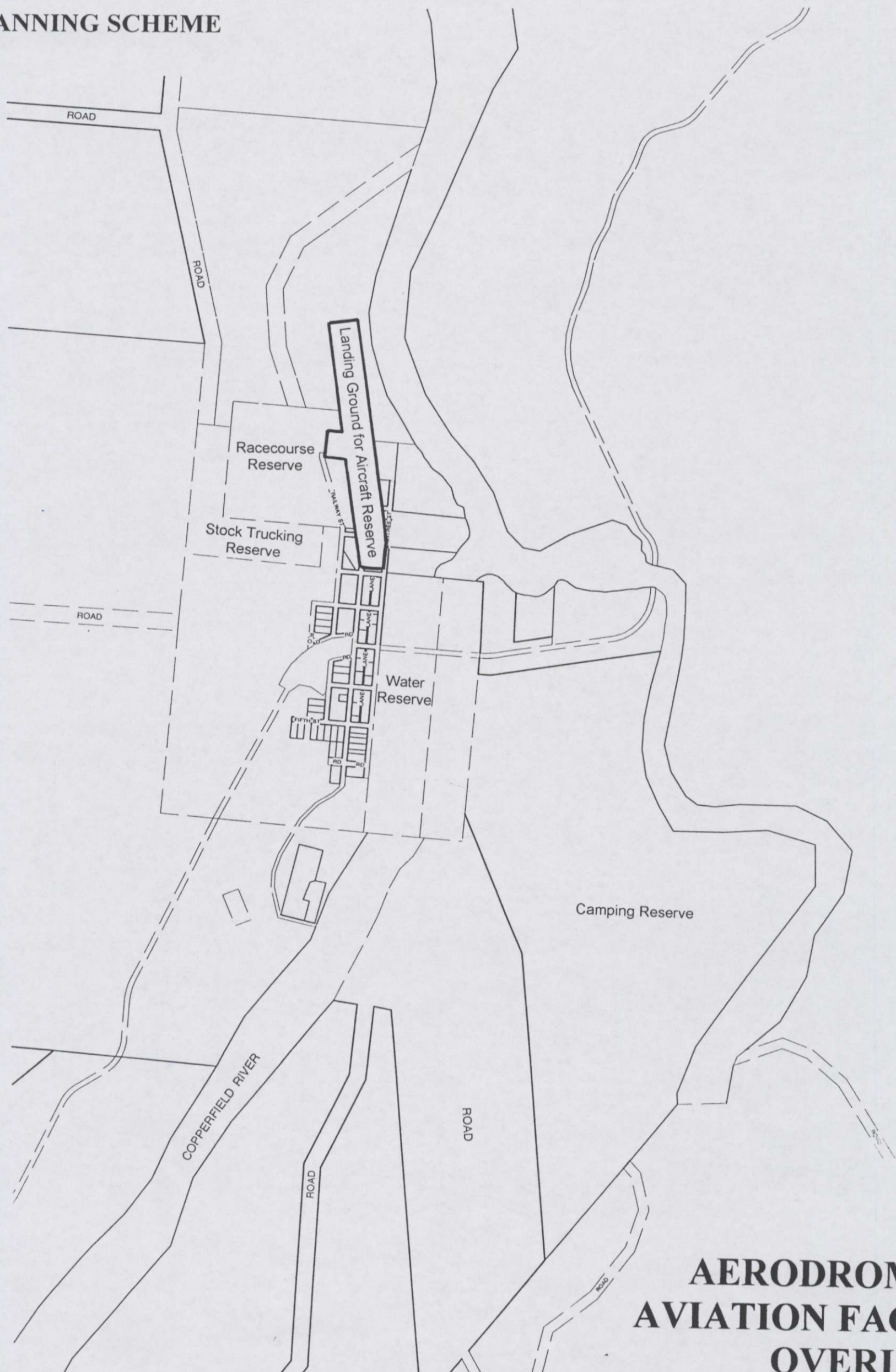
**MAP 3
AERODROMES AND
AVIATION FACILITIES
OVERLAY MAP
MOUNT SURPRISE ENVIRONS**



This planning scheme maps took effect on 28/10/2005.

ETHERIDGE SHIRE COUNCIL

PLANNING SCHEME

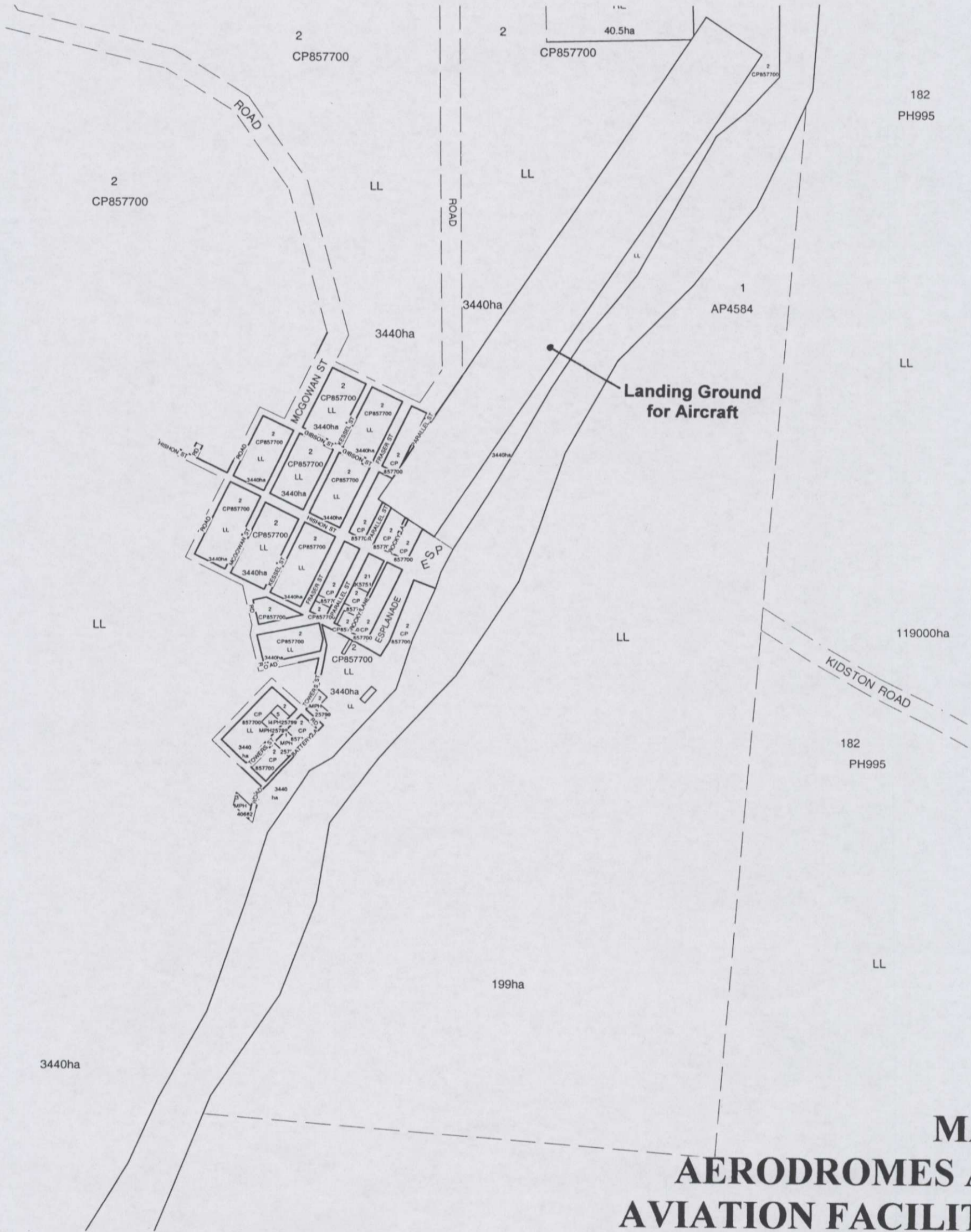


**MAP 4
AERODROMES AND
AVIATION FACILITIES
OVERLAY MAP
EINASLEIGH ENVIRONS**

This planning scheme maps took effect on 28/10/2005.

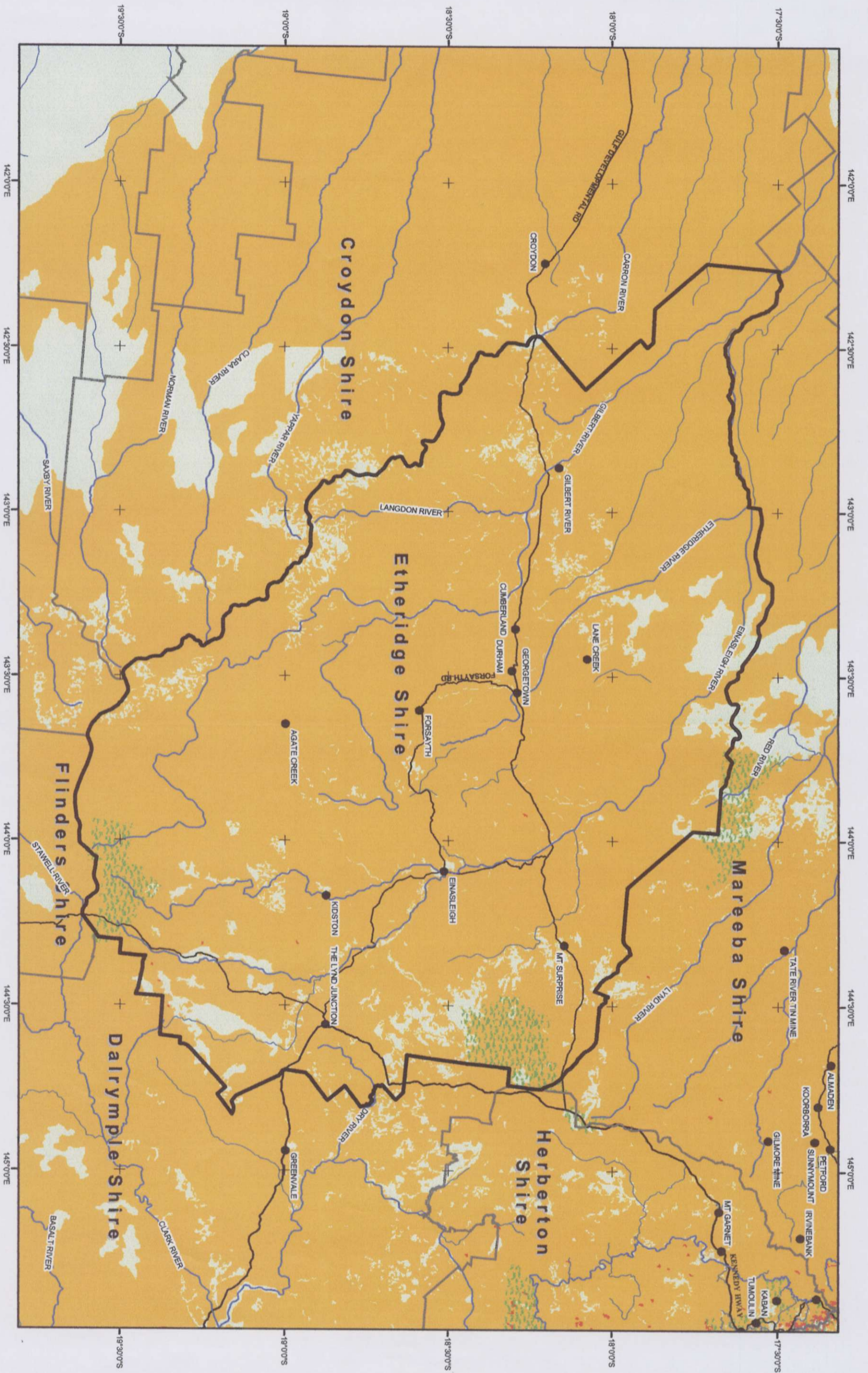
ETHERIDGE SHIRE COUNCIL

PLANNING SCHEME



**MAP 5
AERODROMES AND
AVIATION FACILITIES
OVERLAY MAP
KIDSTON TOWNSHIP**

This planning scheme maps took effect on 28/10/2005.



- Low Bushfire Hazard
- Medium Bushfire Hazard
- High Bushfire Hazard
- Park/Forest
- Watercourse

BUSHFIRE MANAGEMENT OVERLAY MAP

PRODUCED BY THE RURAL FIRE SERVICE OF THE QUEENSLAND FIRE AND RESCUE SERVICE
THIS MAP IS TO BE USED AS A GUIDE ONLY FOR PLANNING PURPOSES

This planning scheme maps took effect on 28/10/2005.

